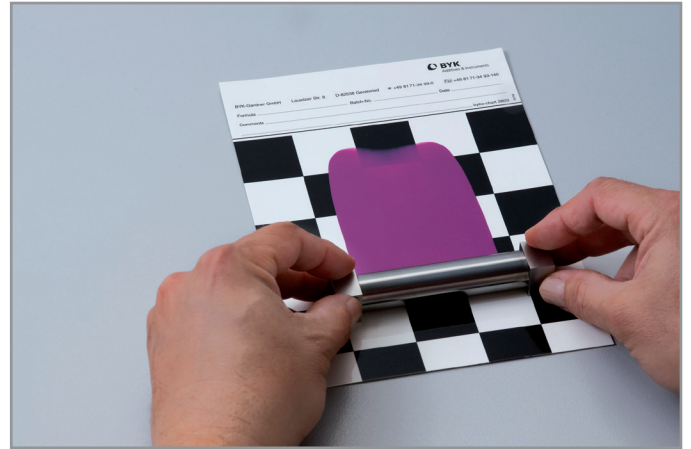


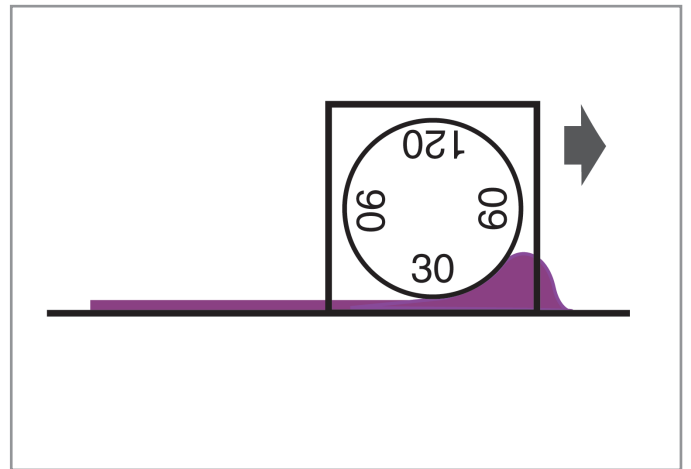
# Film Applicator with 4 Gaps, bar-shaped

Multiple Clearance Applicators are designed for the production of uniform films of paints, adhesives and similar products on plane substrates. They combine the accuracy of fixed applicators with the versatility of multiple clearance / gap choices in one unit. These applicators are suitable for use of aqueous, acid, and alkaline products.



How to choose the right applicator:

- Low viscous paint: applicator frame
- High viscous paint: 4-sided or bar applicator
- Flexible substrates like foils: wire wound applicators



# Standards

ASTM D823

Catalog Number	Short Description	Gap Clearance	Film Width
2020	4-Sided Bar 60, 30-120 µm	<ul style="list-style-type: none"> <li>• 30 µm</li> <li>• 60 µm</li> <li>• 90 µm</li> <li>• 120 µm</li> </ul>	<ul style="list-style-type: none"> <li>• 6 cm</li> </ul>
2021	4-Sided Bar 80, 30-120 µm	<ul style="list-style-type: none"> <li>• 30 µm</li> <li>• 60 µm</li> <li>• 90 µm</li> <li>• 120 µm</li> </ul>	<ul style="list-style-type: none"> <li>• 8 cm</li> </ul>
2040	4-Sided Bar 60, 50-200 µm	<ul style="list-style-type: none"> <li>• 50 µm</li> <li>• 100 µm</li> <li>• 150 µm</li> <li>• 200 µm</li> </ul>	<ul style="list-style-type: none"> <li>• 6 cm</li> </ul>
2041	4-Sided Bar 80, 50-200 µm	<ul style="list-style-type: none"> <li>• 50 µm</li> <li>• 100 µm</li> <li>• 150 µm</li> <li>• 200 µm</li> </ul>	<ul style="list-style-type: none"> <li>• 8 cm</li> </ul>

## Delivery Content

Applicator  
Reuseable storage case

Catalog Number	Short Description	Delivery Content
11210	Glass Drawdown Plate 14" X 16"	
4262	Drawdown Plate, Glass	
3876	Vacuum Plate S, black anodized, 9x12"	Vacuum plate 2 x Hose fitting (one to fit ¼" tubing and one for 3/8" tubing) Rubber footings
3882	Vacuum Plate, Stainless Steel 9x12"	Vacuum plate 2 x Hose fitting (one to fit ¼" tubing and one for 3/8" tubing) Rubber footings
11205	Vacuum Plate, Aluminum 12x18"	